



KEY GRIP SYSTEMS
Development

STRAIGHT TRACKS

Monotracks



Modular

KGS Development's Monotrack is a modular track system consisting of two separate rails assembled using sleepers whose length determines the track gauge.

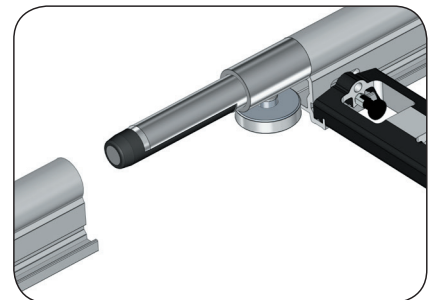
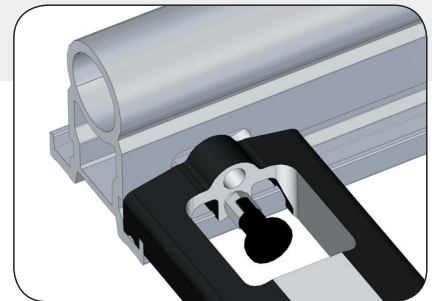
This makes a large number of gauges possible utilising the same rails.

The tracks, which are thus much easier to transport, can be lengthened to avoid the disadvantages of connecting tracks together.

A wide range of sleepers offers numerous wheelbase options.

Monotracks are linked together by fixed or adjustable couplings. This assembly ensures an excellent alignment of tracks and connections.

Monotracks are symmetrical and are designed to be used with sleepers attached in four different ways, each of which is designed for a specific use.





KEY GRIP SYSTEMS
Development

STRAIGHT TRACKS

Monotracks

Straight Monotracks Metric



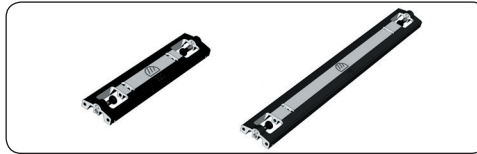
length
0,5 m
1,0 m
2,0 m
3,0 m
4,0 m
6,0 m

Straight Monotracks Imperial



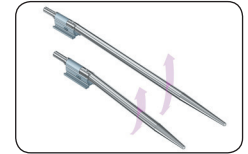
length
2'
4'
6'
8'
10'
12'
14'
16'
18'
20'

Sleepers



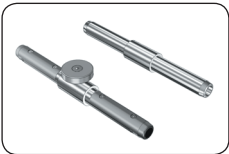
	width		width
Minitrack	12 19/32"	Crane	34 39/64"
Narrow Pee Wee	16"	Fisher 10 crab	36 47/64"
Standard dollies	24 1/2"	Crane	39 3/8"
Fisher dolly	24 19/64"	Wide crab Hybrid	41 7/32"
Wide Track Hybrid	30 1/2"	Technocrane	57"
Crab Pee Wee	31 1/2"		
Crab Pee Wee IV	31 11/16"		

Monotrack tilting starter ramp



length
short
long

Coupling

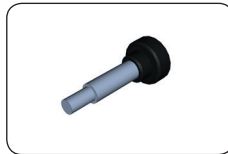


Coupling	Fixed
Coupling	Adjustable

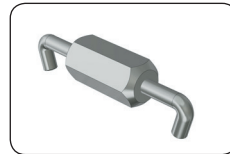
Adapter to straight track



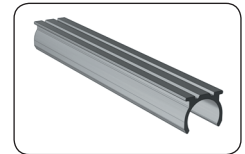
Monotrack screws



Joiner



Protective Cover



4 ways of fixing the Monotracks sleepers

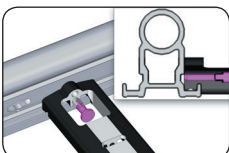
Laid Wide choice of sleepers placed between the tracks and determine the wheelbase. The track can be used even at this stage.

Laid + fixed The sleepers are laid and fixed between the tracks, having no predefined position. At this stage, the tracks can be both used and moved.

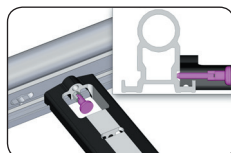
Laid + fixed + positioned The sleepers are fixed to the tracks at predefined sites. At this stage, two tracks may be connected with joiners.

Laid + fixed + positioned + screwed in place When used with heavy loads (such as cranes), the sleepers may be solidly screwed to the tracks to ensure maximum rigidity.

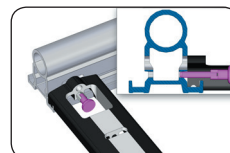
Laid



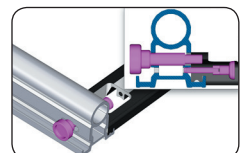
Laid + fixed



Laid + fixed + positioned



Laid + fixed + positioned + screwed in place





KEY GRIP SYSTEMS
Development

RAILS DROITS

Monorails

Monorails Droits « Métriques »



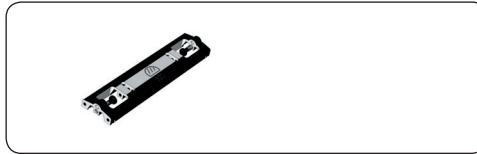
longueur
0,5 m
1,0 m
2,0 m
3,0 m
4,0 m
6,0 m

Monorails Droits "inch/feet"



longueur
2'
4'
6'
8'
10'
12'
14'
16'
18'
20'

Traverses



	Largeur
Minitrack	320
Narrow Pee Wee	407
Standard dollies	620
Fisher dolly	629
Wide Track Hybrid	775
Crab Pee Wee	800
Crab Pee Wee IV	805

Montée de rail articulée



Longueur
court
long

Coupling



Coupling	Fixe
Coupling	Mâchoire (noir)

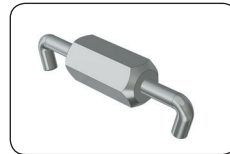
Intermédiaire Monorails



Vis Monorails



Tendeurs



Protection

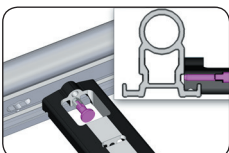


f

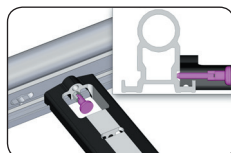
f

f

Posées



Posées



Posées
+ positionnées



Posées
+ positionnées + vissées

